



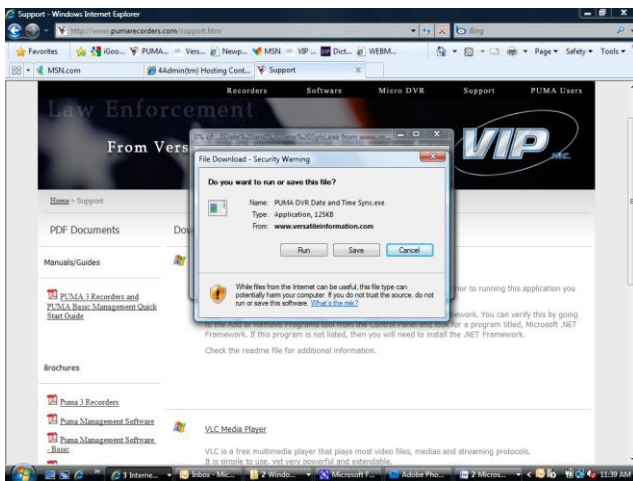
# PUMA DVR Software Date and Time Sync



## Quick Start Guide

### Installing the Software

1. Connect the PUMA DVR to the computer via a USB port.
2. Click the PUMA DVR Software - Date and Time Sync from the pumarecorders.com web site

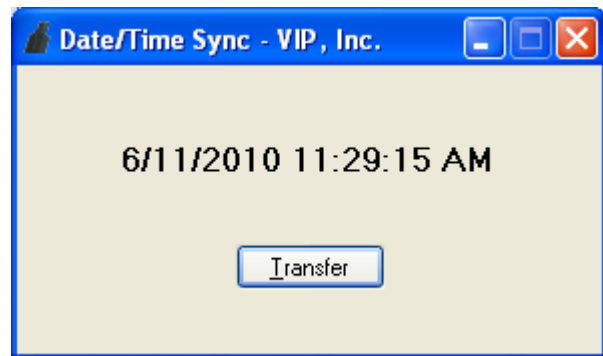


3. Click-on the Run button in the File Download dialog box.

NOTE: The PUMA DVR Date and Time Sync application requires the Microsoft .NET Framework. Windows Vista and Windows 7 users do not need to be concerned because these operating systems come preloaded with the .NET Framework. If you are a Windows Vista or Windows 7 user, then you can skip over to section 2, Using the Software.

3) Windows XP users will need to verify if they have the .NET Framework. You can verify this by going to the **Add or Remove Programs** tool from the **Control Panel** and look for a program titled, **Microsoft .NET Framework**. If this program is not listed, then you will need to install the .NET Framework.

4. The PUMA DVR application will display the computer's current date and time. Click the [**Transfer**] button to send the date and time of the computer to the PUMA DVR. A message box will appear shortly after confirming the syncing of the date and time.



5. Close the PUMA DVR application by clicking the red "X" button located at the upper right hand corner of the application window and then disconnect the PUMA DVR from the PC.